

How do you tell your story?



Outdoor application with built-in AUDIRE listening station

Listening station AUDIRE

It's the attractive and playful spaces with a good story to match that make the difference when it comes to your visitors' experiences and emotions.

Our new «AUDIRE» listening station offers a real alternative to power-dependent multimedia terminals. Similar to a bicycle, the listening station's energy is produced by turning the hand wheel. With the first rotation, the capacitors begin to charge and the MP3 audio files are played immediately. An LED status indicator, which changes from red to green when fully charged, shows the user the status of the stored charge. The MP3 audio files are stored on the internal SDHC

memory card. The contents can be stored as individual files or in a group folder. Up to six buttons can be assigned on the listening station (e.g. for a language or track selection). A loudspeaker or headphones can optionally be connected. For a three-minute audio article, the visitor only has to turn the crank for 20 seconds! The additional 5 VDC connection socket can be used to charge a smartphone, for example. The listening station was developed for year-round use outdoors or indoors. It is very robust and resilient. The design and choice of materials for the listening station can be determined by the customer.



Scope of delivery listening station Audire

AREAS OF APPLICATION

Boundary stones, lookout points, castles, fortresses, garden shows, public spaces, mountain huts, hiking trails, children's playgrounds, etc.



Crystal Display Electronics AG

Zürcherstrasse 37a
8852 Altendorf
Switzerland

0041 (0) 55 451 54 54
sales@crystal-cde.com
www.crystal-cde.com

TECHNISCHE DATEN

Artikel CRY-AUDIO-HST

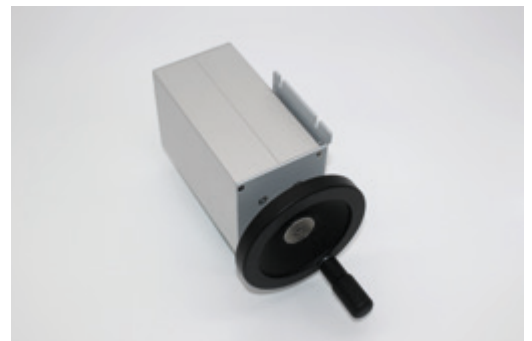
Particular properties
Playback time with full charge: 4 min
100% human-powered
Suitable for outdoor use all year round
Easy exchange of MP3 files
A fun way to provide your visitors with information
Straightforward handling, robust design
Excellent sound quality
Volume can be defined (child protection)
Language or track selection with max. 6 buttons
Various playback modes can be selected
Control via configuration file (.txt)
File format
MP3 audio file
Data storage
SDHC memory card
Dimensions (without crank)
160 x 105 x 85 mm

Connectivity
3.5 mm jack plug for stereo headphones
Screw terminals for stereo speakers
Screw terminals for LED status display (red/green)
SDHC memory card slot
5 VDC output (e.g. for USB charging station)
6 inputs for key connection (screw terminals)
External potentiometer for volume
Internal potentiometer
Loudspeaker
12W - 8 Ohm / dimensions 90 x 90 x 35 mm
Accessories
Anodised aluminium housing
Drive unit with crank D 125 mm
Audio player PCB
Universal mounting bracket
Loudspeaker with cable, length 50 cm
LED status indicator with 2 colours, length 50 cm

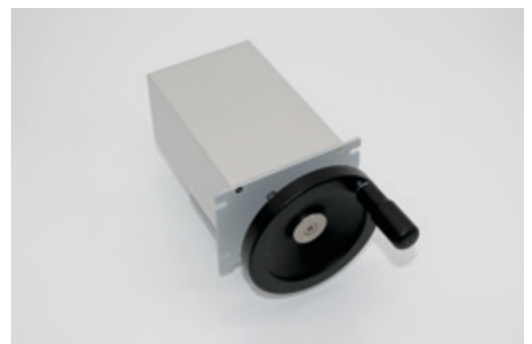
LISTENING STATION AUDIRE



Plug-in card with audio player and energy store



Side mounting



Front mounting

Crystal Display Electronics AG is an innovative and customer-focused development and trading company in the fields of electronic media and industrial electronics. From prototype construction to series development, we offer you the highest degree of flexibility and perseverance in finding solutions. We attach great importance to straightforward cooperation characterised by mutual trust.